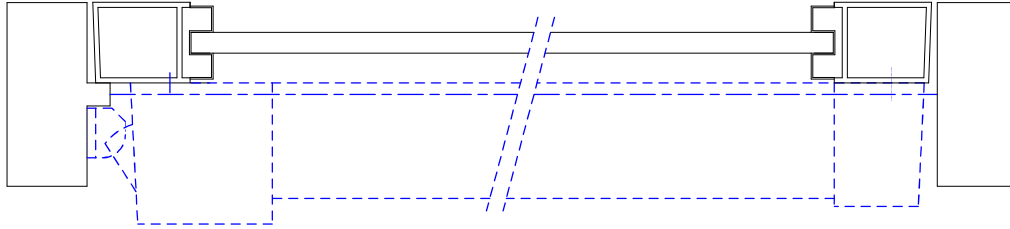




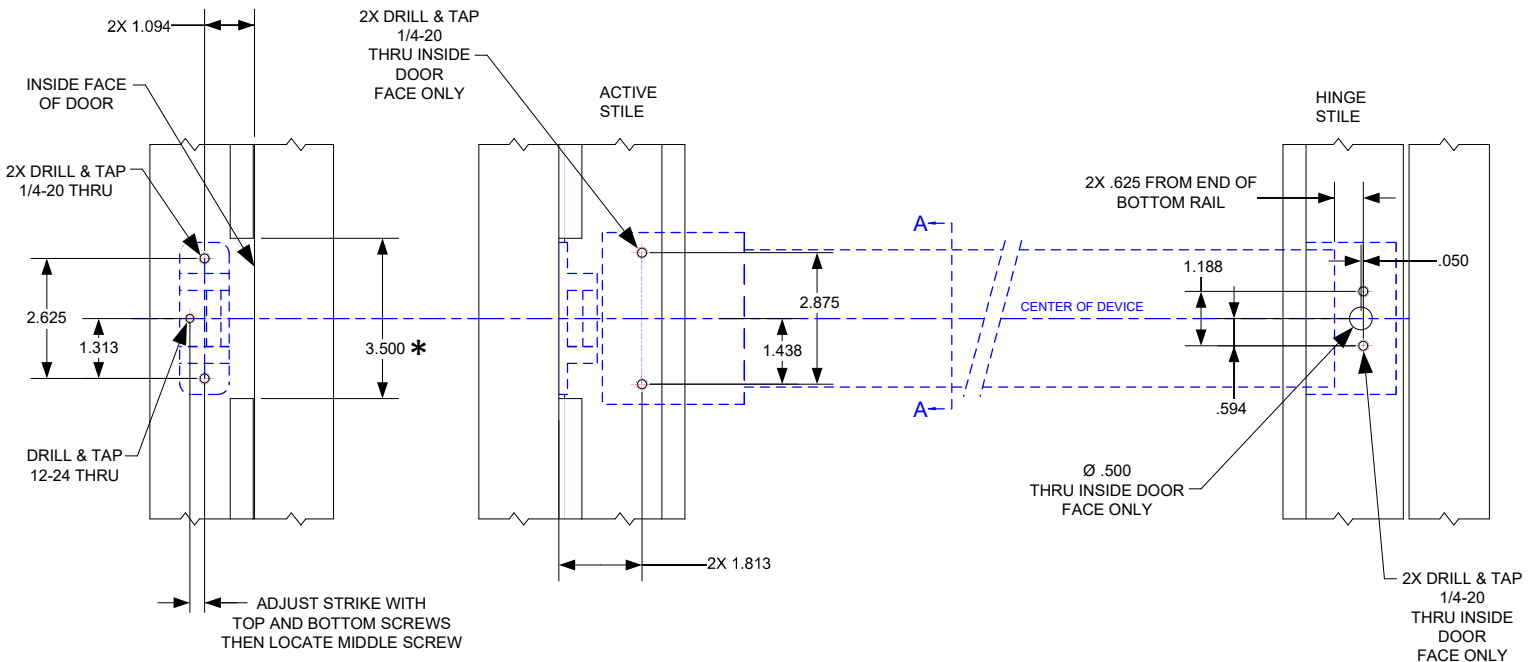
# INSTALLATION INSTRUCTIONS

## S5100 RIM EXIT DEVICE

Electrical Data  
1.5A Inrush / 200mA Holding  
RED (+)      BLK (-)



VIEW FROM TOP OF DOOR



\* CUTOUT REQUIRED ONLY IF STOP IS PRESENT

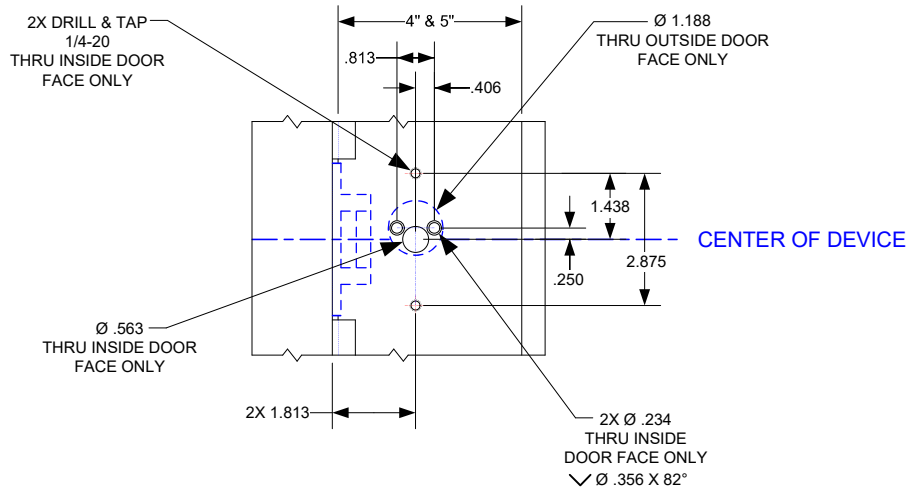
INTERIOR VIEW OF DOOR

SECTION VIEW A-A

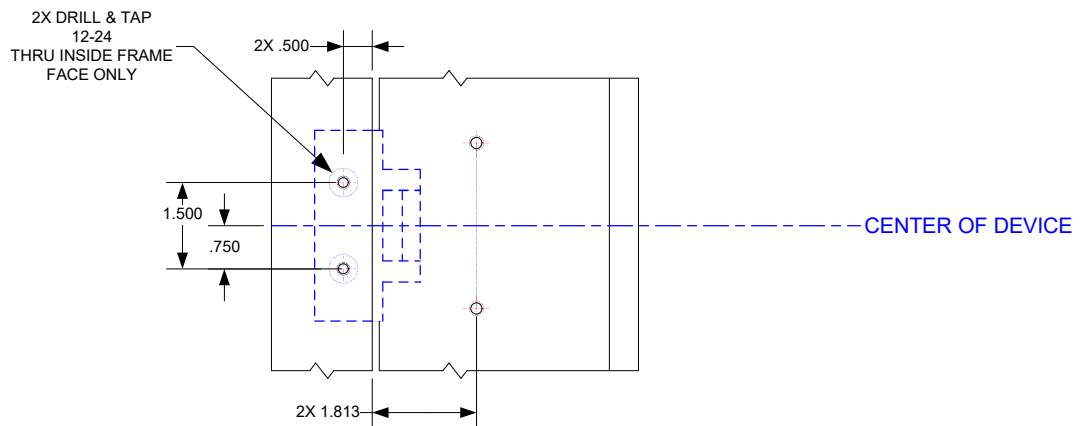
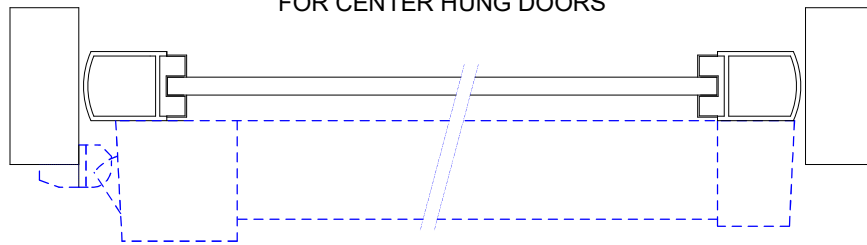


### RIM CYLINDER PREP FOR MEDIUM AND WIDE DOOR STILES

#### ACTIVE STILE



#### STRIKE MOUNTING FOR CENTER HUNG DOORS



\*Item is sold separately, see part number and finish availability below

ST51CV – Center Mounting Extension Block 628 Finish

ST51CY – Center Mounting Extension Block 335 Finish